

MCT LED Disk Light with PIR

WESTGATE[®]

Installation instructions for Model: DLS4-MCT-PIR

WARNING:

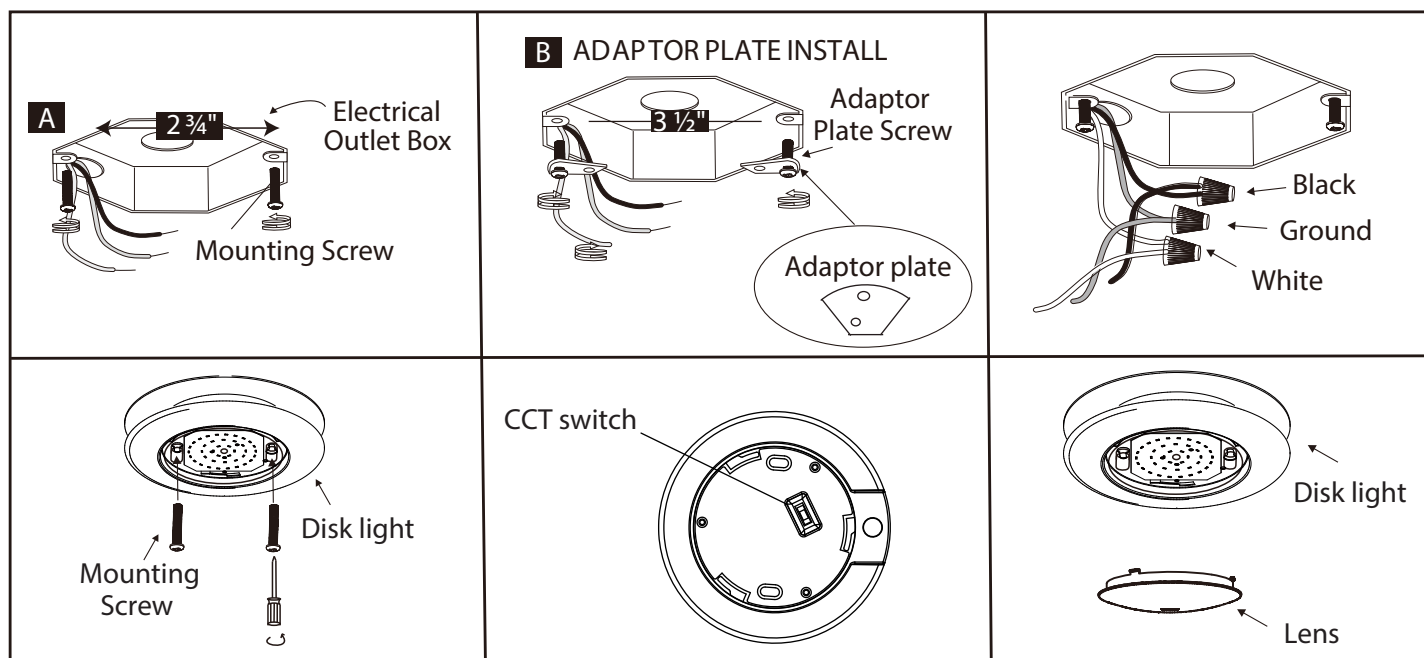
- Read all instruction before installation.
- System is intended for installation by a qualified electrician in accordance with the National Electrical Code and local regulations.
- Go to the main fuse box, or circuit breaker. Place the main power switch in the "OFF" position and unscrew the fuse(s) or switch "OFF" the circuit breaker switch(es) that control the power to the fixture or room that you are working on.
- Place the wall switch in the "OFF" position.
- Supply conductors (Power Wires) Connecting the fixture must be rated minimum 90°C. If uncertain, consult an electrician.

CAUTIONS

- These luminaires (fixtures) are designed to meet the latest NEC requirements and are listed in full compliance with ETL list.
- Before attempting installation, check your local electrical code, as it sets the wiring standards for your locality.

INSTALLATION

Over standard electrical junction box



1. Prior to installation you will need to determine if the electrical box requires the adaptor plate. If the distance between the mounting screws in your electrical outlet box is greater than 2³/₄" you will need to use the adaptor plate. Securely tighten adaptor plate, with adaptor plate screws. Do not drive mounting screws completely to the end of the junction box.
2. Connect supply wires to wires on fixture with wire nuts. Connect white to white, black to black, and copper wire to copper wire as grounding connection.
3. With the lens off of fixture, tighten screws to firmly hold the fixture in place.
4. Select the temperature needed.
5. Complete the installation by twisting the lens on the disk light.

www.westgatemfg.com

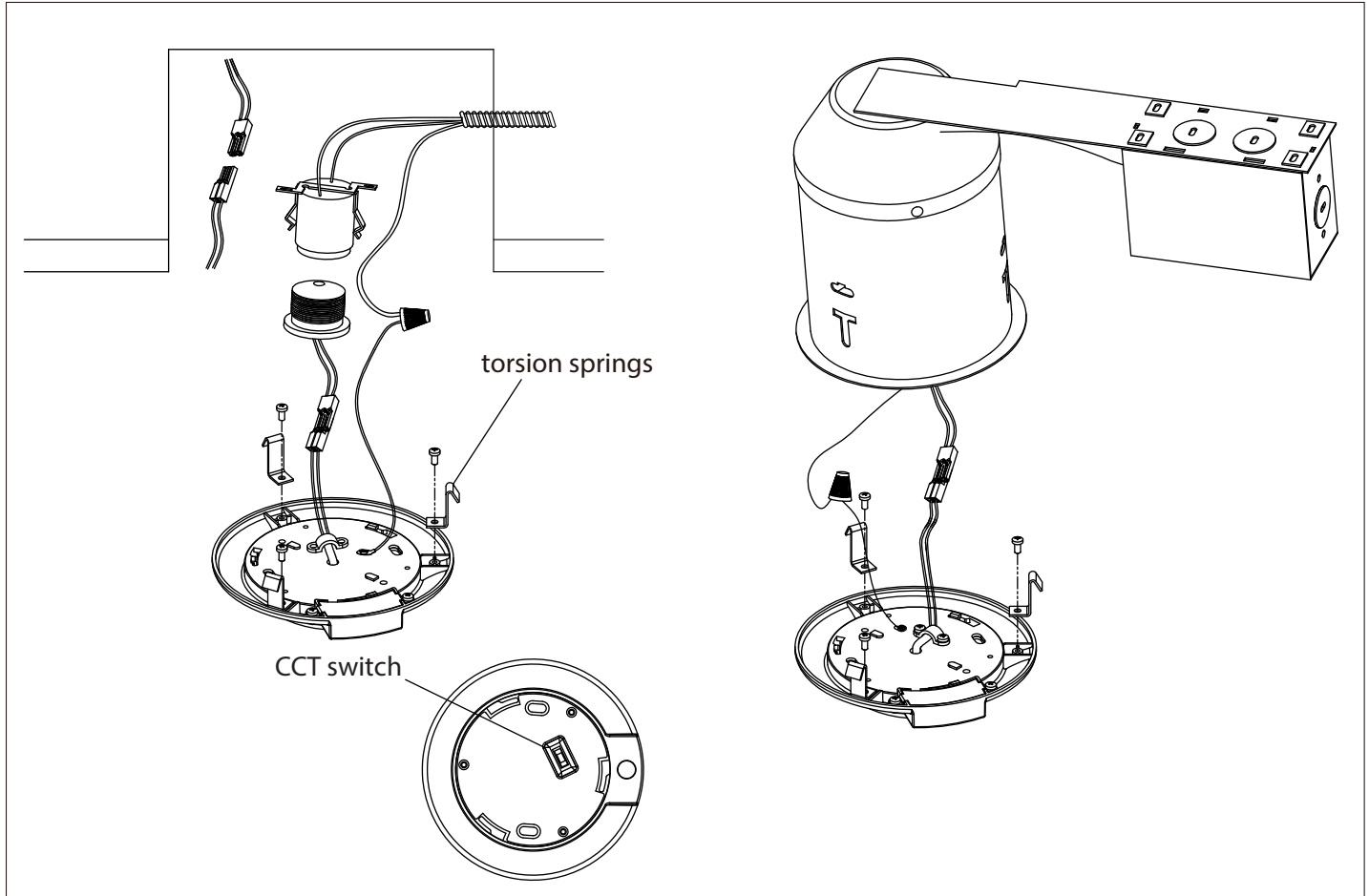
Technical drawings for illustration purposes only. Westgate has the right to change any information without prior notice. Make sure you check all hole cut outs before work commences.

MCT LED Disk Light with PIR

WESTGATE®

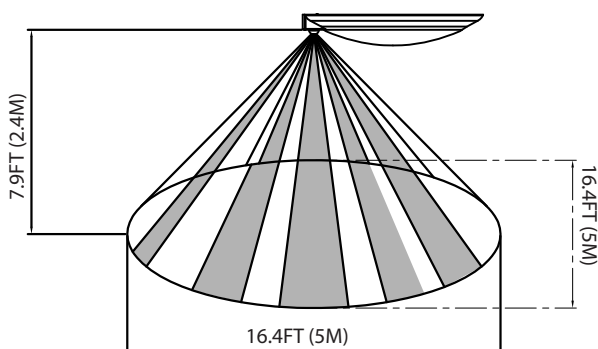
Installation instructions for Model: DLS4-MCT-PIR

Installation onto existing 4 inch recessed housings

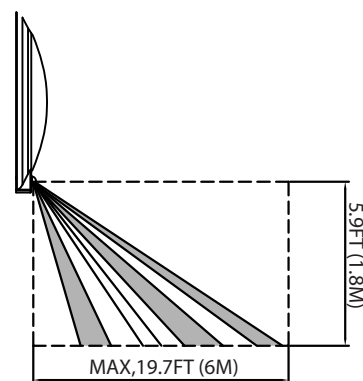


1. Screw the torsion springs on the fixture.
2. Screw E26 "medium screw base" socket adapter into socket in housing.
3. Plug the female connector of the disc light onto the male connector of the socket adapter assembly.
4. Squeeze the torsion springs together as shown and install into torsion spring brackets inside the housing.
5. Tuck all wires into to the housing and carefully push the disk light into housing.
6. Select the temperature needed.
7. Twist the lens clockwise on disk light metal enclosure and lock the lens in place.

Sensor Detection Range



Ceiling Mount sensor Detection Range



Wall Mount sensor Detection Range

www.westgatemfg.com

Technical drawings for illustration purposes only. Westgate has the right to change any information without prior notice. Make sure you check all hole cut outs before work commences.